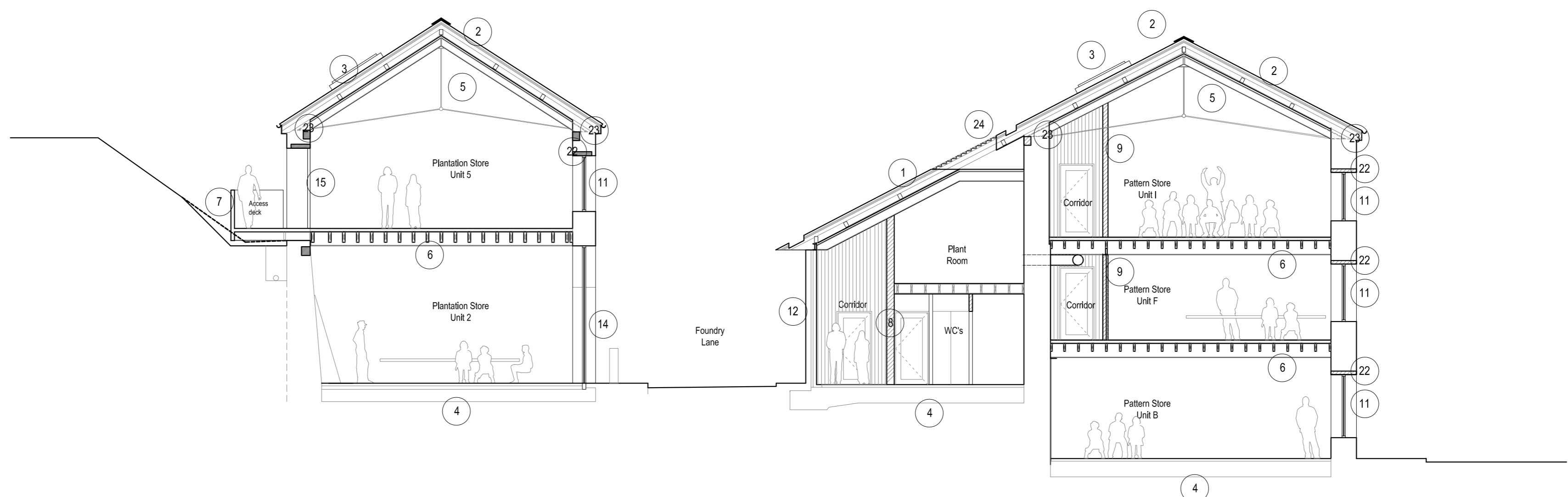


DATUM 0.00M



DATUM 0.00M

NOTES:

- 1 New standing seam patinated zinc roof to Cart Shed.
- 2 New Cornish slate roof to Plantation Store and Pattern shop.
- 3 New double glazed 'Conservation' rooflights.
- 4 New in-situ concrete floor slab as S.Engs detail to ground floor incorporating radon membrane.
- 5 New steel roof truss with cable bracing and steel pulins supporting insulated timber rafters as S.Engs proposals.
- 6 18mm Plywood on 50mm insulation with underfloor heating on 20 softwood boarding on 300x50 C24 timber joists at 400c/s.
- 7 New steel framed cantilevered external access deck.
- 8 Partitions to be 140mm concrete block with lime plaster finish.
- 9 Partitions to be 125mm metal studs with Rockwool insulation between and clad both sides with Plywood and Plasterboard.
- 10 New thermally broken aluminum framed glazed infill to existing 'cart' entrance. Double doors fitted with automatic door openers and intercom system linked to each office unit.
- 11 Existing window openings fitted with new painted SW casement windows fitted with double glazed units. New windows to match existing glazing pattern and where possible re-use existing salvageable joinery.
- 12 External walls to be insulated studwork with Wooden rain-screen cladding.
- 13 New thermally broken aluminum framed glazed infill to entrance. Single pivot doors fitted with automatic door opener and intercom system linked to each office unit.
- 14 New thermally broken aluminum framed glazed infill to existing openings to offices. Screens fitted with single pivot doors.
- 15 New openings made in rear elevation to provide access to office units. 3no. openings coincide with existing window openings.
- 16 New bespoke steel stair & balustrades. Stair treads clad in 32mm thick European oak.
- 17 Bespoke steel bridge & balustrades. Bridges fitted with Oak floor finish.
- 18 New 215mm thick Engineering brick walls to full height of Lobby/Stairwell.
- 19 New 215mm thick fairfaced 'Staffordshire Blue' engineering brick wall adjacent to stair.
- 20 New pre-cast concrete stair supported on adjacent walls. Stair treads & risers clad in 32mm thick European Oak with rebates for non-slip nosings.
- 21 New platform lift concealed behind walls to provide wheelchair access to first floor level.
- 22 Replace existing timber lintels with new precast concrete lintels. Existing Stone lintels on outside face to remain.
- 23 Top of all existing walls locally repaired as required.
- 24 New flush louvered vent (ppc aluminum)

ISSUED FOR PLANNING

REVISION	DATE	DRAWN	CHECKED	DESCRIPTION	SCALE	DATE
B	04.09.2012			Note Amendments.		
C	02.10.2012	NE		Changes to WC block; Concrete lintels added; foundation amended.		
D	03.10.2012	NE	BF	Louvered vent added; new stair design; Pavement amended; Ventilation ducts added. Bollards added.		
				CLIENT	Harvey's Foundry Hale	
				PROJECT	Harvey's Foundry Hale	
				DRAWING TITLE	Proposed Sections	
				JOB NUMBER	233183	206
				DRAWING NO.	D	