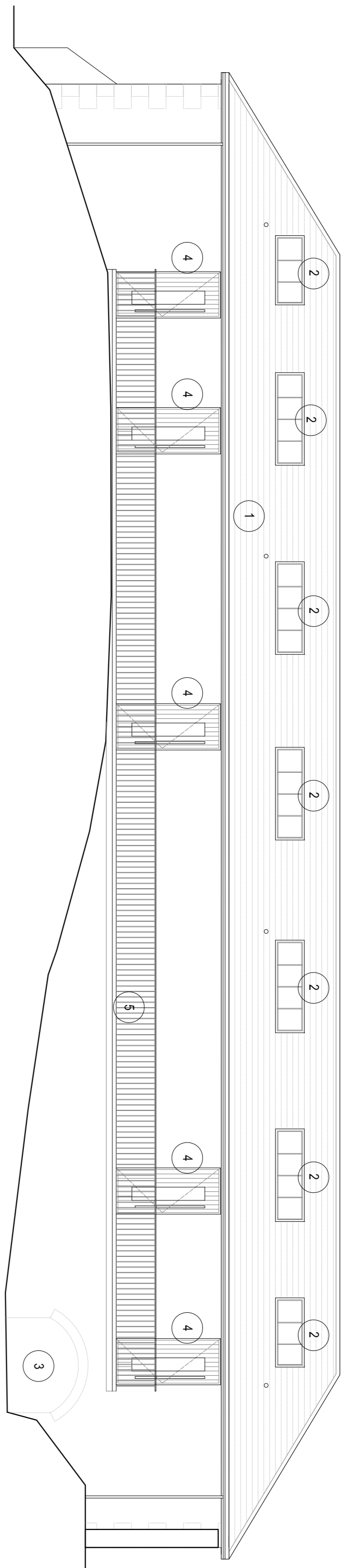
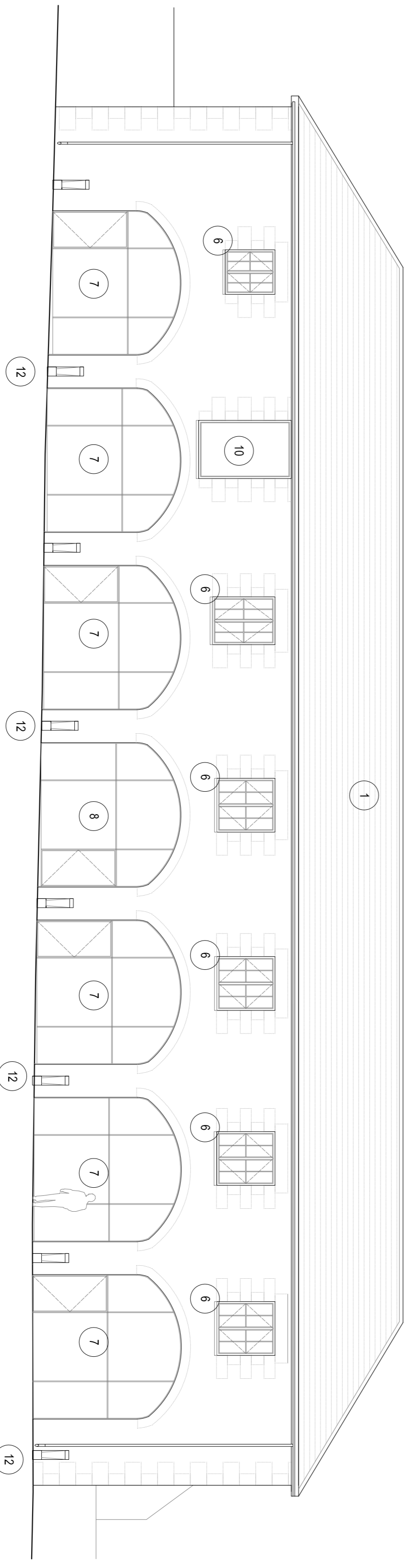


SOUTH EAST ELEVATION

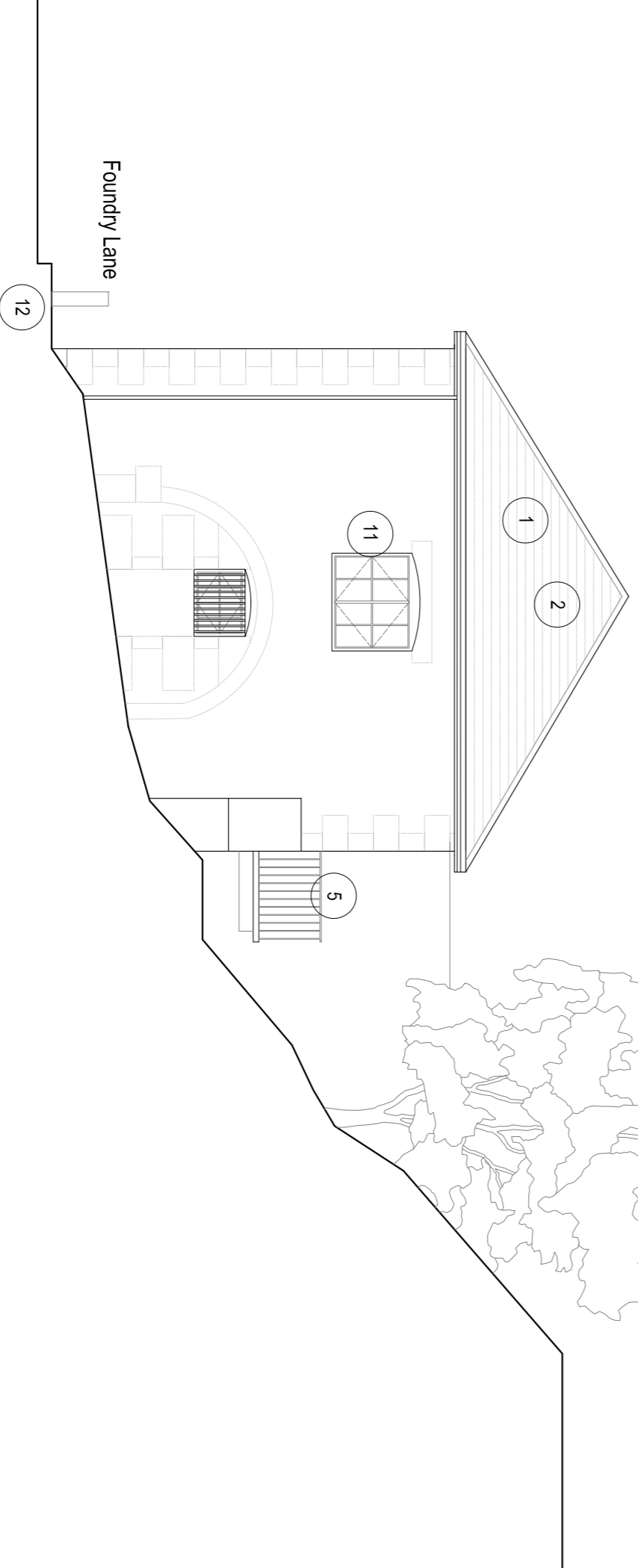


SOUTH WEST ELEVATION

- NOTES:
- ① New Cornish slate roof.
 - ② New double glazed 'Conservation type' Rooflights.
 - ③ Existing opening infilled with granite rubble stone to match existing.
 - ④ New openings made in rear elevation to provide access to office units. 3no. openings coincide with existing window openings.
 - ⑤ External steel framed cantilevered access balcony to rear elevation.
 - ⑥ Existing window openings filled with new painted S/W casement windows fitted with double glazed units. New windows to match existing glazing pattern and where possible re-use existing salvageable joinery.
 - ⑦ New thermally broken aluminium framed glazed infill to existing openings to offices. Screens fitted with single doors.
 - ⑧ New thermally broken aluminium framed glazed infill to entrance. Single door fitted with automatic door opener and intercom system linked to each office unit at first floor level.
 - ⑨ SPARE
 - ⑩ Existing door opening infilled with thermally broken aluminium framed framed glazing.
 - ⑪ Existing cast iron window repaired / redubished.
 - ⑫ New bollard lighting adjacent to entrances.



NORTH EAST ELEVATION



NORTH WEST ELEVATION

ISSUED FOR PLANNING

- D 03.10.2012 NE BF Bolards added; roof light omitted on North West elevation; sign's added; Note amendments.
- C 04.09.2012 NE BF Note Amendments.
- B 04.08.2012 Resealed Roof lights and note amendments. Window added on North West Elevation.

REVISION	DATE	DRAWN	CHECKED	DESCRIPTION	SCALE	DATE
CLIENT	Harvey's Foundry Hale	1:1,000@A1	13 Feb 2012			
DESIGNED BY	NE					
DRAWING TITLE	Planation Store Elevations	233183	205			
JOB NUMBER						
DRAWING NO.						
REVISION						



30 WIND STREET, BRIGHTON, BN1 4DZ, TEL: 01177 877736, FAX: 01177 877736
 100 WIND STREET, BRIGHTON, BN1 4DZ, TEL: 01177 877736, FAX: 01177 877736
 100 WIND STREET, BRIGHTON, BN1 4DZ, TEL: 01177 877736, FAX: 01177 877736