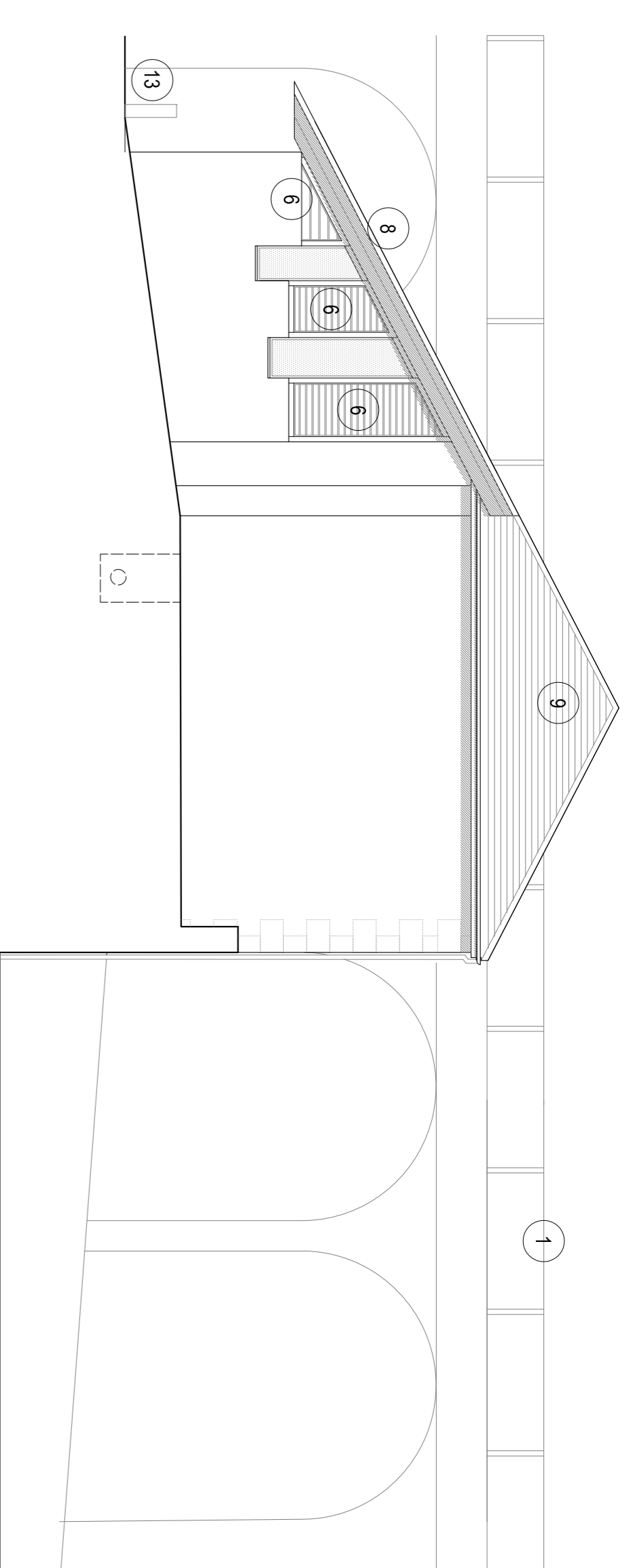
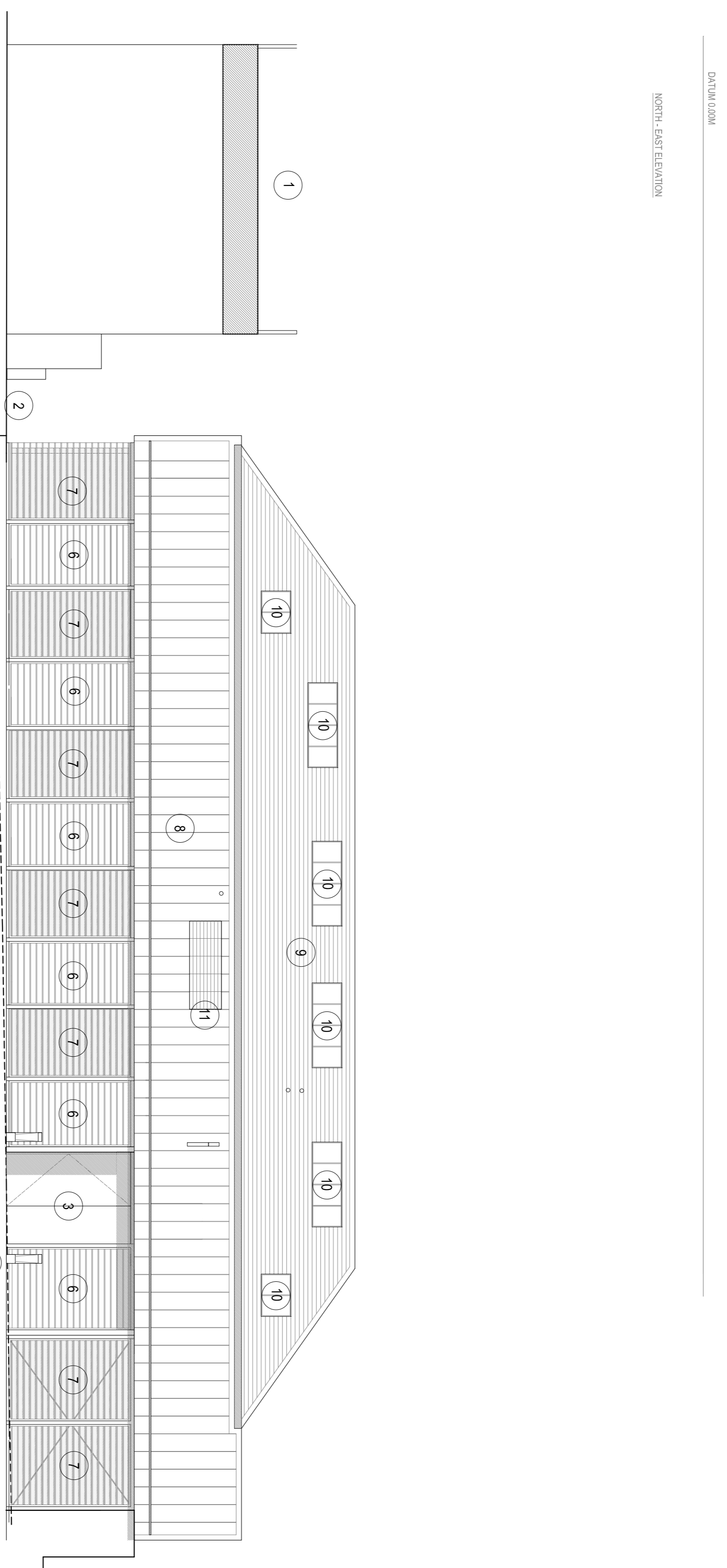


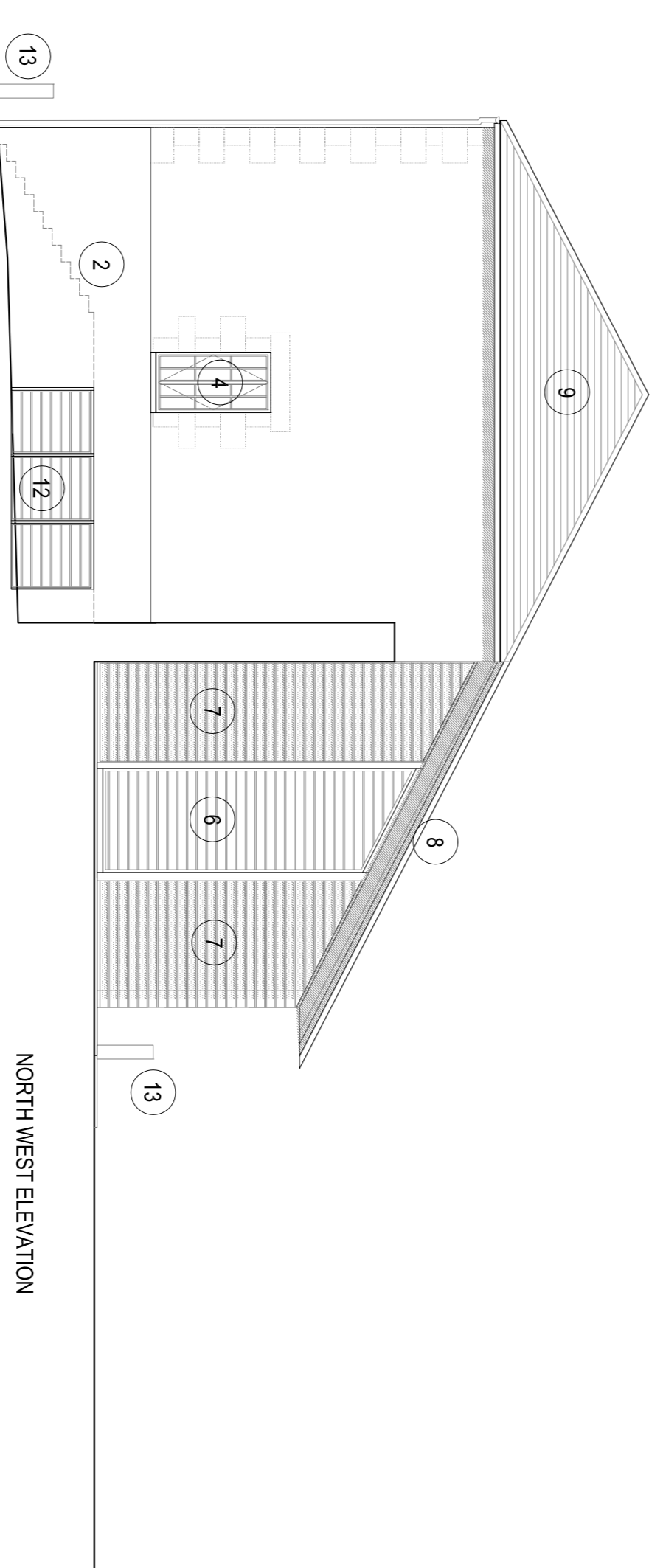
NORTH EAST ELEVATION



SOUTH EAST ELEVATION



SOUTH EAST ELEVATION



NORTH WEST ELEVATION

NOTES:

- 1 Existing Railway Viaduct.
- 2 New external access steps to provide public route to/from Foundry Lane. Steps supported on new fairfaced engineering brick 75m wall.
- 3 New thermally broken aluminium framed glazed screens and doors to existing ground floor openings.
- 4 Existing window openings fitted with new painted SW casement windows fitted with double glazed units. New windows to match existing glazing pattern and where possible re-use existing salvageable joinery.
- 5 New thermally broken aluminium framed glazed infill to existing opening Existing boarded doors retained and repaired.
- 6 External walls to be insulated Studwork with stained timber rain-screen cladding.
- 7 Windows to be thermally broken aluminium glazing system fitted with sealed double glazed units. Windows screened with stained timber external louvers.
- 8 Patinated Zinc standing seam roof to Car Shed.
- 9 New Cornish slate roof.
- 10 New double glazed conservation type rooflights.
- 11 New flush louvered vent (pvc aluminium).
- 12 Metal louvered doors to external stores (pvc steel).
- 13 New bollard lighting adjacent to entrances.

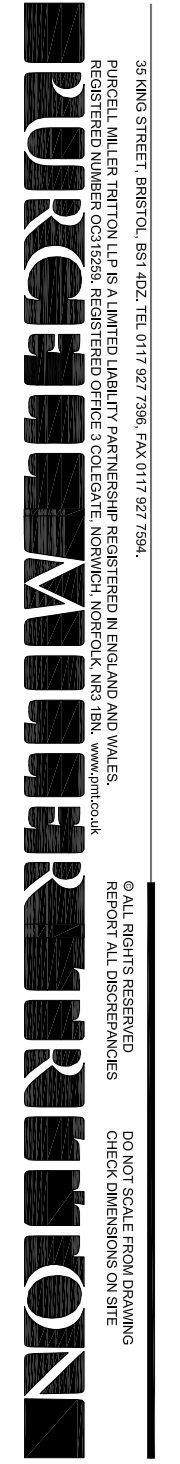
DATUM 0.00M
SOUTH - WEST ELEVATION

DATUM 0.00M
NORTH - WEST ELEVATION

ISSUED FOR PLANNING

- A 04.08.2012 Road lights added, Doors to Bin Store added and Note amendments.
- B 04.09.2012 Note Amendments, Lineworky amendments.
- C 03.10.2012 Note Amendments, Boll. Note, louvered vent and signs added.

REVISION	DATE	DRAWN	CHECKED	DESCRIPTION	SCALE	DATE
1	04.08.2012	NE	NMN	Issue for Planning	1:100 @ A1	13 Feb 2012
2	04.09.2012	NE	NMN	Note Amendments, Lineworky amendments		
3	03.10.2012	NE	NMN	Note Amendments, Boll. Note, louvered vent and signs added		



35 SHAW STREET, BIRCHLEY, BR7 4DZ, TEL: 01777 7736, FAX: 01777 7736
 HIGH STREET, WILTON, LEICESTER, LE12 6JG, TEL: 01533 612345, FAX: 01533 612345
 100 MARKET STREET, LONDON, E1 1AN, TEL: 020 7494 8888, FAX: 020 7494 8889

CLIENT: Harvey's Foundry Hale
 DRAWING NO: 233183
 REVISION: C